



# Welcome to the information evening 2025

'Christ at the  
Centre'



# Welcome to the St Peter's Family.

'Christ at the  
Centre'



# SENDCO

'Christ at the  
Centre'



Mrs. G Foster

# Meet the Early Years Team



Mr Read Y1/2 Lead



Mrs Naomi Tuft EYFS Lead



Mrs Bradbury



Mrs Moriarty



Mrs Dyer



Miss Athill



Miss Compton



Miss Smith



Mrs Woods



Mrs Solivajs



Mrs Black

Mrs M

# Dates for your Diaries

'Christ at the  
Centre'



## May, June and July

- Visits and phone calls to pre-schools and nursery settings.
- Drop in sessions Wed 18<sup>th</sup>, 25<sup>th</sup> June and 2nd July at 3:45-4:15pm
- 'Stay and Play' Friday 18th July 9:15-10:15am

## September

- Year 1 start on Wednesday 3<sup>rd</sup> September
- Home visits between Wednesday 3<sup>rd</sup> to Friday 5th September
- Year R start full time from the 8<sup>th</sup> September

# What is the Early Years Foundation Stage (EYFS)?

## Four Themes

- A Unique Child
- Positive Relationships
- Enabling Environments
- Learning and Development

## Three Prime Areas of Learning

- Communication and language
- Physical development
- Personal, social and emotional development

## Four Specific Areas

- Literacy
- Mathematics
- Understanding the world
- Expressive arts and design



'Christ at the  
Centre'



# School readiness

## Growing independence

### Taking care of themselves

- Putting on/taking off their coat and shoes
- Using the toilet and washing their hands
- Getting dressed with little help, e.g. after using the toilet or doing PE
- Using cutlery (e.g. fork and spoon, chopsticks) and drinking from an open cup
- Spending time away from you, learning they can be looked after by caring adults

### Play, creativity and curiosity

- Taking part in imaginative play (e.g. role play)
- Drawing, painting, colouring and sticking
- Sharing story books with caregivers, looking at pictures and talking about the characters
- Exploring the world around them (e.g. looking closely at the natural world or playing safely with objects at home)



'Christ at the  
Centre'



# School readiness

## Building relationships and communicating

### Being with others

- Practising sharing and taking turns with toys
- Talking to them about how they are feeling and why
- Looking at story books together and speaking about what characters are feeling is a good way to do this
- Beginning to recognise what others are feeling, e.g. understanding if a friend is sad
- Encouraging them to set boundaries for themselves and others (e.g. knowing how to say 'no')

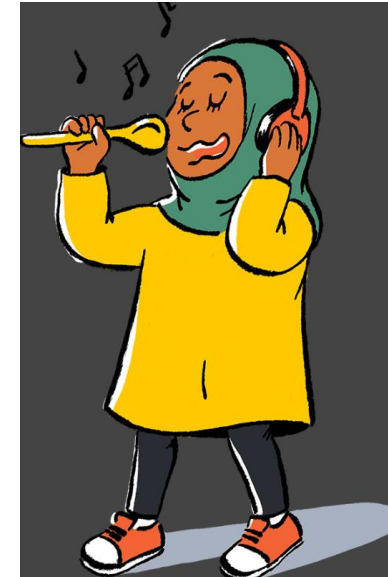
### Communication and language

- Singing along with songs and nursery rhymes
- Talking happily to others about activities, experiences and the world around them
- Showing they need help by speaking clearly (in basic English or sign language)
- Recognising the pattern of their name (so they can find it on their coat peg or jacket)

### Listening and engaging

- Paying attention for short periods of time
- Listening to and following simple instructions
- Carrying on with a task even when it's difficult and bouncing back if things go wrong

'Christ at the  
Centre'



# School readiness

'Christ at the  
Centre'



## Physical development

### Getting moving for at least three hours a day

- Walking up and down steps (one foot at a time, using the wall for support)
- Climbing, running, jumping and playing
- Catching a large ball (most of the time)
- Doing simple puzzles and craft activities, strengthening their grip with cutting and sticking



## Healthy routines

- Going to bed around the same time each night, waking up in time to get ready for school
- Limiting screen time to the recommended daily amounts (see advice)
- Eating a healthy diet and trying new foods
- Brushing their teeth with fluoride toothpaste twice a day (you'll need to supervise this until they are at least 7)

<https://startingreception.co.uk/>

# Year R/1 mixed- our vision



**Continuous provision provides the opportunity for children to...**



- ☛ learn independently
- ☛ develop the confidence to select appropriate resources.
- ☛ apply knowledge and skills in a meaningful context.
- ☛ engage in deeper learning as they return to, repeat and extend resulting in mastery.
- ☛ develop skills such as collaboration and problem solving.

# Year R/1 mixed- our vision

Scientists have recently determined that it takes approximately 400 repetitions to create a new synapse in the brain – unless it is done with play in which case it takes between 10 and 20 repetitions

**Dr Karyn Purvis**

'Christ at the  
Centre'



# Year R/1 mixed- our learning

- Phonics, reading
- Maths
- Wider curriculum
- Inside/outside – COOL time
- Lunch times and break times

'Christ at the  
Centre'



# A day in class

- 8:40-3:30pm
- Building good relationships with adults and children
- Unique child – thrill, will, skills
- Continuous Provision (COOL time)
- Following children's interests
- Adult directed tasks – must do tasks
- Story time – rich vocabulary



# Home - School link

- How we will communicate with parents
- Seesaw
- PE kit
- Library/reading books
- Numbots



Seesaw



# WE NEED...



Blankets

Cookery books

Satchels and  
shoulder bags

Photo frames

Toy cars

Old home equipment

- Remotes
- Scales
- No longer used phones

Plastic animals

Wallpaper rolls

Unused  
notebooks

**'Christ at the  
Centre'**



Thank you for coming!



# PTA



**SUMMER FETE**  
Saturday 7th June  
12 to 3pm

**WE WANT YOU!**

[www.volunteersignup.org/TBXBD](http://www.volunteersignup.org/TBXBD)

Sign up to help out!



All proceeds in aid of St Peter's Primary School Parent Teacher Association

The poster features a blue background with colorful bunting at the top. A purple banner contains the event title. Below it, the date and time are listed. A yellow speech bubble with the text 'WE WANT YOU!' is prominent. A URL is provided for sign-up. A QR code is shown with an arrow pointing to it from the text 'Sign up to help out!'. At the bottom, there are illustrations of a Ferris wheel and a carousel horse. The PTA logo is in the bottom right corner.



**ST PETER'S SUMMER FETE**  
**RAFFLE**  
Draw Saturday 7<sup>th</sup> June 2025  
2.30pm

Online sales ONLY  
get your tickets here



raffall.com

**OVER £2,000 WORTH OF PRIZES !!**

- 1st Prize -  
A four-ball round of golf  
@ The Royal Winchester Golf Club
- 2nd Prize -  
A stay for 2, including breakfast  
@ The Royal Winchester Hotel
- 3rd Prize -  
A spa day for 2  
@ Winchester Hotel and Spa

**60 PRIZES UP FOR GRABS!**

All proceeds in aid of St Peter's Primary School Parent Teacher Association

The poster features a blue background with colorful bunting at the top. A blue banner contains the event title. Below it, the word 'RAFFLE' is written in large, bold letters. The draw date and time are listed. A yellow banner highlights the prize value. Three prize categories are listed with their respective locations. A QR code is shown with an arrow pointing to it from the text 'get your tickets here'. At the bottom, there are illustrations of a Ferris wheel and a carousel horse. The PTA logo is in the bottom right corner.

'Christ at the Centre'

